



Airbus A380 Wing. Transportation Barge.



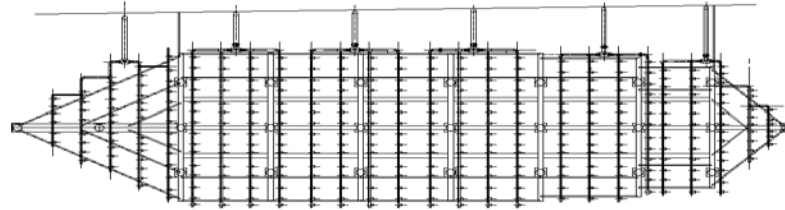
The Airbus A380 "superjumbo" which will carry 555 passengers will take to the skies in test flights in 2005.

The 80 meter span wings are manufactured in Flintshire and travel by land, river, and sea to their final destination of Toulouse, France.

The wings travel by 96 wheel trailer to the river Dee, where they are loaded onto a barge which takes the wings to the ship bound for France, moored at Mostyn Docks. The barge has been fitted with a comprehensive polyethylene pipe-work silt clearing system which was fabricated and installed by Woodford Plastics Limited.



Section of the barge showing blower nozzles.



Schematic layout of main piping.

Scope Of Work

- Pre-fabricate large sections of manifold in the workshop.
- Transport to site and assemble on steel superstructure.
- Install all connecting pipe-work.
- Weld all sections together.



Other products and services:

Plastic pipe & fittings supply

Plastic Pipe & fittings installation

Plastic tanks and vessels

Secondary containment systems

GRP structures and walkways

PTFE lined steel pipes & fittings

Bespoke plastic fabrications

Special points of interest:

- Large sections pre-fabricated in the workshop.
- Final joints welded on site
- Contract completed on-time
- Contract completed on budget
- Minimum interruption to barge superstructure manufacture.

Woodford Plastics Limited, Star Works, Wham Street, Heywood, Lancs OL10 4QU

Tel: 01706 366667 **Email:** sales@woodfordplastics.co.uk

Fax: 01706 366616 **Web site:** www.woodfordplastics.co.uk